

HOPE

ROAD



A person is seen from behind, walking away on a long, straight asphalt road that stretches towards a range of mountains in the distance. The person is wearing a dark jacket and jeans. The road has white lane markings and some visible cracks. The landscape is open with some dry vegetation on the sides. The sky is clear and bright.

LUKE 24:13-35 - THE EMMAUS ROAD

**"EXPERIENCING HOPE AND RESURRECTION POWER IN THE
MIDST OF CONFUSION AND DISCOURAGEMENT"**

HOPE ROAD

A person is seen from behind, walking away on a long, straight asphalt road that stretches towards a range of mountains in the distance. The person is wearing a dark denim jacket over a light-colored shirt and blue jeans. The landscape is arid with some dry vegetation on the sides of the road. The sky is clear and bright. A black horizontal bar is positioned across the middle of the image, containing the text 'THE SITUATION'. In the bottom right corner, the words 'HOPE' and 'ROAD' are written in a stylized, outlined font, with 'HOPE' in green and 'ROAD' in pink.

THE SITUATION

HOPE ROAD

A person is seen from behind, walking away on a long, straight asphalt road that stretches towards a range of mountains in the distance. The person is wearing a dark denim jacket over a light-colored shirt and blue jeans. The road has white lane markings and shows some wear. The landscape is open with some dry vegetation on the sides. The sky is clear and bright.

EXPERIENCING HOPE AND RESURRECTION POWER IN THE MIDST OF CONFUSION AND DISCOURAGEMENT

HOPE ROAD

A person is seen from behind, walking away on a long, straight asphalt road that stretches towards a range of mountains in the distance. The person is wearing a dark denim jacket over a light-colored shirt and blue jeans. The landscape is arid with some dry vegetation on the sides of the road. The sky is clear and bright. A black horizontal bar is positioned across the middle of the image, containing white text.

1: INVITE GOD IN

HOPE ROAD

**²⁸SO THEY DREW NEAR TO THE VILLAGE TO WHICH THEY
WERE GOING. HE ACTED AS IF HE WERE GOING
FARTHER,**

LUKE 24:28-30 (ESV)

²⁹BUT THEY URGED HIM STRONGLY, SAYING, “STAY WITH US, FOR IT IS TOWARD EVENING AND THE DAY IS NOW FAR SPENT.” SO HE WENT IN TO STAY WITH THEM.

LUKE 24:28-30 (ESV)

**³⁰WHEN HE WAS AT TABLE WITH THEM, HE TOOK THE
BREAD AND BLESSED AND BROKE IT AND GAVE IT TO
THEM.**

LUKE 24:28-30 (ESV)

**¹⁸THE LORD IS NEAR TO THE BROKENHEARTED
AND SAVES THE CRUSHED IN SPIRIT.**

PSALM 34:18 (ESV)

A person is seen from behind, walking away on a long, straight asphalt road that stretches towards a range of mountains in the distance. The person is wearing a dark denim jacket over a light-colored shirt and blue jeans. The landscape is arid with some dry vegetation on the sides of the road. The sky is clear and bright. A black horizontal bar with white text is overlaid across the middle of the image.

2: SURRENDER YOUR EXPECTATIONS

HOPE ROAD

**¹⁹AND HE SAID TO THEM, “WHAT THINGS?” AND THEY SAID TO HIM,
“CONCERNING JESUS OF NAZARETH, A MAN WHO WAS A PROPHET
MIGHTY IN DEED AND WORD BEFORE GOD AND ALL THE PEOPLE,
LUKE 24:19-21 (ESV)**

**²⁰AND HOW OUR CHIEF PRIESTS AND RULERS
DELIVERED HIM UP TO BE CONDEMNED TO DEATH, AND
CRUCIFIED HIM.**

LUKE 24:19-21 (ESV)

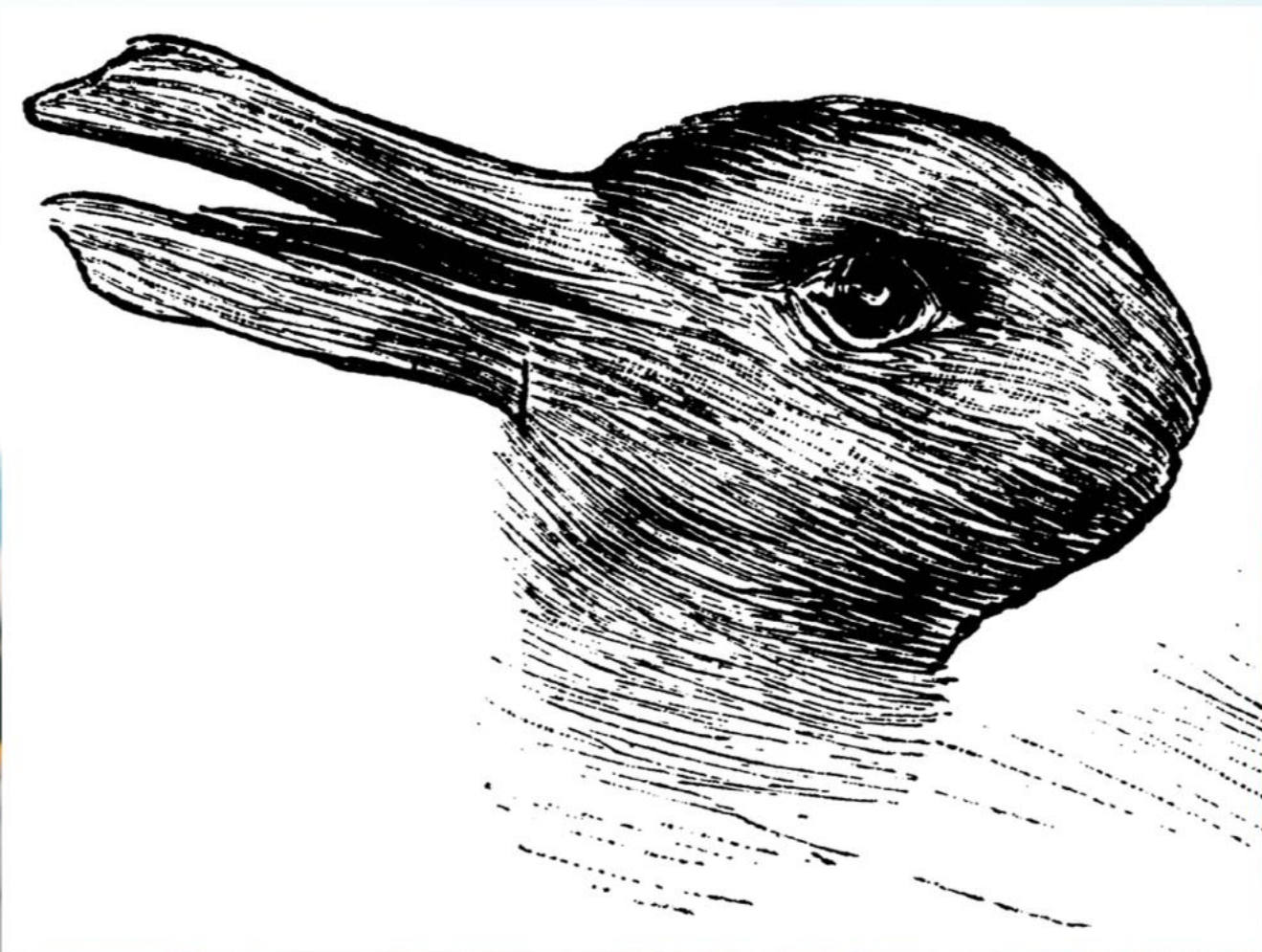
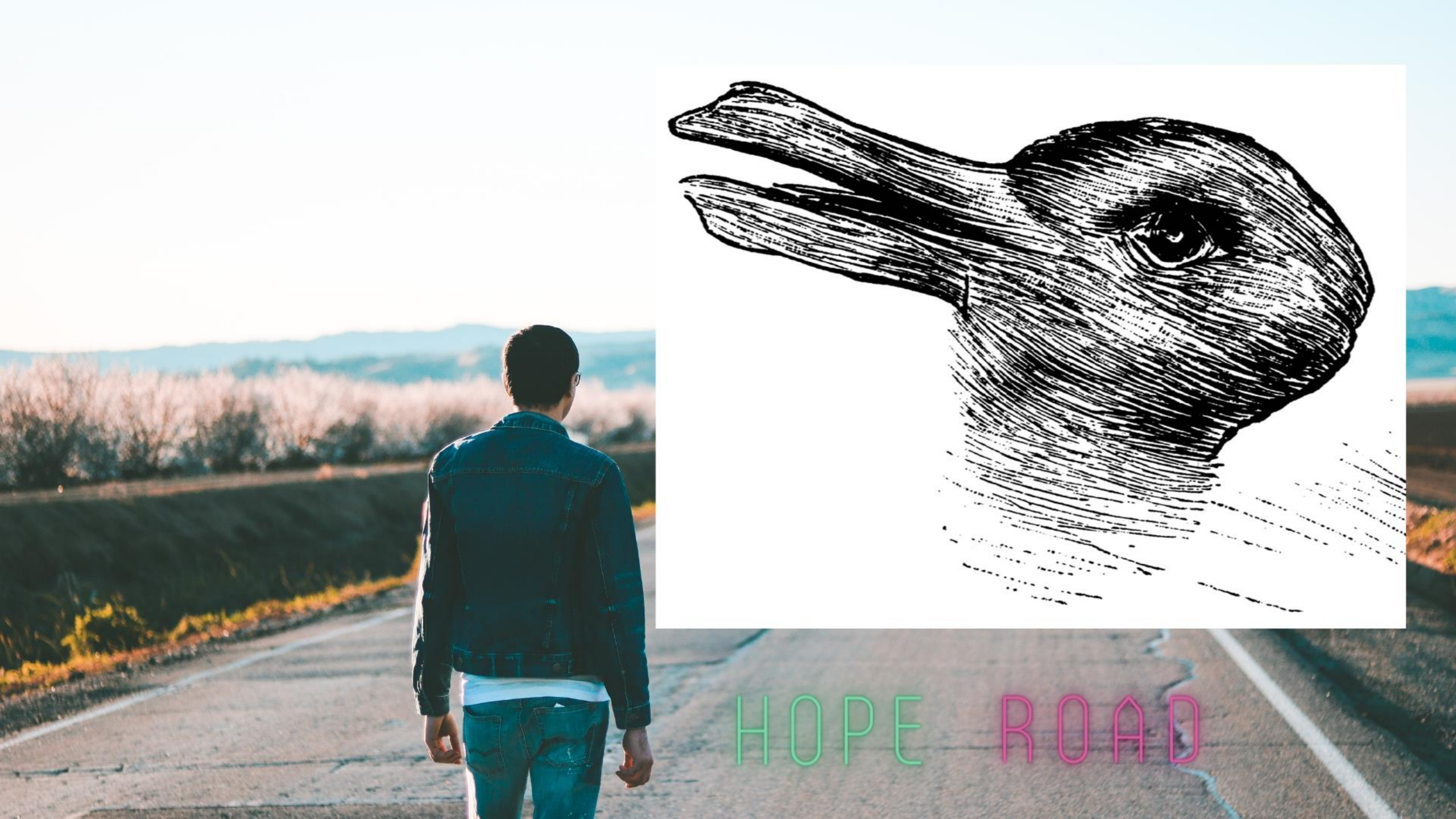
**²¹BUT WE HAD HOPED THAT HE WAS THE ONE TO
REDEEM ISRAEL. YES, AND BESIDES ALL THIS, IT IS
NOW THE THIRD DAY SINCE THESE THINGS HAPPENED.
LUKE 24:19-21 (ESV)**

**³⁴JESUS SAID TO THEM, “MY FOOD IS TO DO THE WILL
OF HIM WHO SENT ME AND TO ACCOMPLISH HIS WORK.
JOHN 4:34 (ESV)**

A person is seen from behind, walking away on a long, straight asphalt road that stretches towards a range of mountains in the distance. The person is wearing a dark denim jacket over a light-colored shirt and blue jeans. The landscape is arid with some dry vegetation on the sides of the road. The sky is clear and bright. A black horizontal bar with white text is overlaid across the middle of the image.

3: SEEK GOD'S PERSPECTIVE

HOPE ROAD



HOPE ROAD

**²⁵AND HE SAID TO THEM, “O FOOLISH ONES, AND SLOW
OF HEART TO BELIEVE ALL THAT THE PROPHETS HAVE
SPOKEN!**

LUKE 24:25-27 (ESV)

**²⁶WAS IT NOT NECESSARY THAT THE CHRIST SHOULD
SUFFER THESE THINGS AND ENTER INTO HIS GLORY?”
LUKE 24:25-27 (ESV)**

**²⁷AND BEGINNING WITH MOSES AND ALL THE
PROPHETS, HE INTERPRETED TO THEM IN ALL THE
SCRIPTURES THE THINGS CONCERNING HIMSELF.**

LUKE 24:25-27 (ESV)

**⁸FOR MY THOUGHTS ARE NOT YOUR THOUGHTS,
NEITHER ARE YOUR WAYS MY WAYS, DECLARES THE
LORD.**

ISAIAH 55:8-9 (ESV)

**⁹FOR AS THE HEAVENS ARE HIGHER THAN THE EARTH,
SO ARE MY WAYS HIGHER THAN YOUR WAYS
AND MY THOUGHTS THAN YOUR THOUGHTS.**

ISAIAH 55:8-9 (ESV)

A person is seen from behind, walking away on a long, straight asphalt road that stretches towards a range of mountains in the distance. The person is wearing a dark denim jacket over a light-colored shirt and blue jeans. The landscape is open with some dry vegetation on the sides. The sky is clear and bright. A black horizontal bar is superimposed over the middle of the image, containing the text '4: TRUST GOD'S TIMING'. In the bottom right corner, the words 'HOPE' and 'ROAD' are written in a stylized, outlined font, with 'HOPE' in green and 'ROAD' in pink.

4: TRUST GOD'S TIMING

HOPE ROAD

**³⁰WHEN HE WAS AT TABLE WITH THEM, HE TOOK THE
BREAD AND BLESSED AND BROKE IT AND GAVE IT TO
THEM.**

LUKE 24:30-31 (ESV)

**³¹AND THEIR EYES WERE OPENED, AND THEY
RECOGNIZED HIM. AND HE VANISHED FROM THEIR
SIGHT.**

LUKE 24:30-31 (ESV)

**⁸BUT DO NOT OVERLOOK THIS ONE FACT, BELOVED,
THAT WITH THE LORD ONE DAY IS AS A THOUSAND
YEARS, AND A THOUSAND YEARS AS ONE DAY.**

2 PETER 3:8-9 (ESV)

⁹THE LORD IS NOT SLOW TO FULFILL HIS PROMISE AS SOME COUNT SLOWNESS, BUT IS PATIENT TOWARD YOU, NOT WISHING THAT ANY SHOULD PERISH, BUT THAT ALL SHOULD REACH REPENTANCE.

2 PETER 3:8-9 (ESV)

**⁵TRUST IN THE LORD WITH ALL YOUR HEART,
AND DO NOT LEAN ON YOUR OWN UNDERSTANDING.
PROVERBS 3:5-6 (ESV)**

**⁶IN ALL YOUR WAYS ACKNOWLEDGE HIM,
AND HE WILL MAKE STRAIGHT YOUR PATHS.**

PROVERBS 3:5-6 (ESV)